

RESEARCH NOTE

Damping-off of Deltoid Synurus Caused by *Rhizoctonia solani* AG-1 (IB)

Wan-Gyu Kim*, Gyo-Bin Lee, Hong-Sik Shim, and Weon-Dae Cho

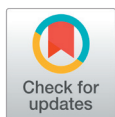
Global Agro-Consulting Corporation, Suwon 16614, Korea

*Corresponding author: wgkim5121@naver.com

ABSTRACT

Damping-off symptoms were frequently observed in young deltoid synurus (*Synurus deltooides*) plants grown in a farmer's vinyl greenhouse located in Hwacheon, Gangwon Province, Korea, during a disease survey in July 2019. The incidence of diseased plants in the vinyl greenhouse investigated was 5-30%. Five isolates of *Rhizoctonia* sp. were obtained from the diseased plants and identified as *Rhizoctonia solani* AG-1 (IB), based on morphological and cultural characteristics and anastomosis test results. Three isolates of *R. solani* AG-1 (IB) were tested for pathogenicity on deltoid synurus using artificial inoculation. All the tested isolates induced damping-off symptoms in the inoculated plants. The symptoms were similar to those observed in plants from the farmer's vinyl greenhouse. To our best knowledge, this is the first report of *R. solani* AG-1 (IB) causing damping-off in deltoid synurus.

Keywords: Anastomosis, Damping-off, Deltoid synurus, *Rhizoctonia solani* AG-1 (IB)



OPEN ACCESS

pISSN : 0253-651X
eISSN : 2383-5249

Kor. J. Mycol. 2021 June, 49(2): 249-251
<https://doi.org/10.4489/KJM.20210022>

Received: February 26, 2021

Revised: April 11, 2021

Accepted: April 20, 2021

© 2021 THE KOREAN SOCIETY OF MYCOLOGY.



This is an Open Access article distributed under the terms of the Creative Commons Attribution Non-Commercial License (<http://creativecommons.org/licenses/by-nc/4.0/>) which permits unrestricted non-commercial use, distribution, and reproduction in any medium, provided the original work is properly cited.

Deltoid synurus [*Synurus deltooides* (Aiton) Nakai], belonging to the daisy family, is widely distributed in northeast Asia. The plant grows in the mountains and has long been used as a wild vegetable and medicinal plant in Korea. Some Korean farmers grow the plant in vinyl greenhouses. Damping-off symptoms were frequently observed in young deltoid synurus plants grown in a farmer's vinyl greenhouse located in Hwacheon, Gangwon Province, Korea, during a disease survey in July 2019. The symptoms initially appeared on plant stems and petioles at the soil line. The infected plant tissues receded and were thin, discolored, and rotten. Diseased plants fell down and later blighted (Fig. 1A and 1B). One hundred plants in the vinyl greenhouse were investigated in triplicate. The incidence of disease among plants was 5-30%.

Rhizoctonia sp. was consistently isolated from diseased deltoid synurus plants. Five isolates of *Rhizoctonia* sp. were obtained from lesions of the diseased plants and identified as *R. solani* Kühn based on the morphological characteristics described in previous studies [1,2].

The isolates were evaluated to classify anastomosis groups using tester isolates of *R. solani*, as previously described [3]. The *R. solani* tester isolates AG-1 (KACC 40101), AG-2-1 (KACC 40119), AG-2-2 (40125), AG-3 (KACC 40138), AG-4 (KACC 40139), and AG-5 (KACC 40146) were obtained from the Agricultural Microbiology Division, National Institute of Agricultural Sciences, Korea. All the tested isolates were classified as *R. solani* AG-1. Anastomosis reactions between the tested isolate and the tester isolate of *R. solani* AG-1 are shown in Fig. 2A. Mycelia of the isolates cultured on potato dextrose agar (PDA)

were light brown to grayish brown (Fig. 2B). Sclerotia were produced separately or aggregately on the medium, and their surface was usually mycelioid or wooly. The culture type of the isolates was identified as IB of *R. solani* AG-1, based on the cultural characteristics described in a previous study [4].

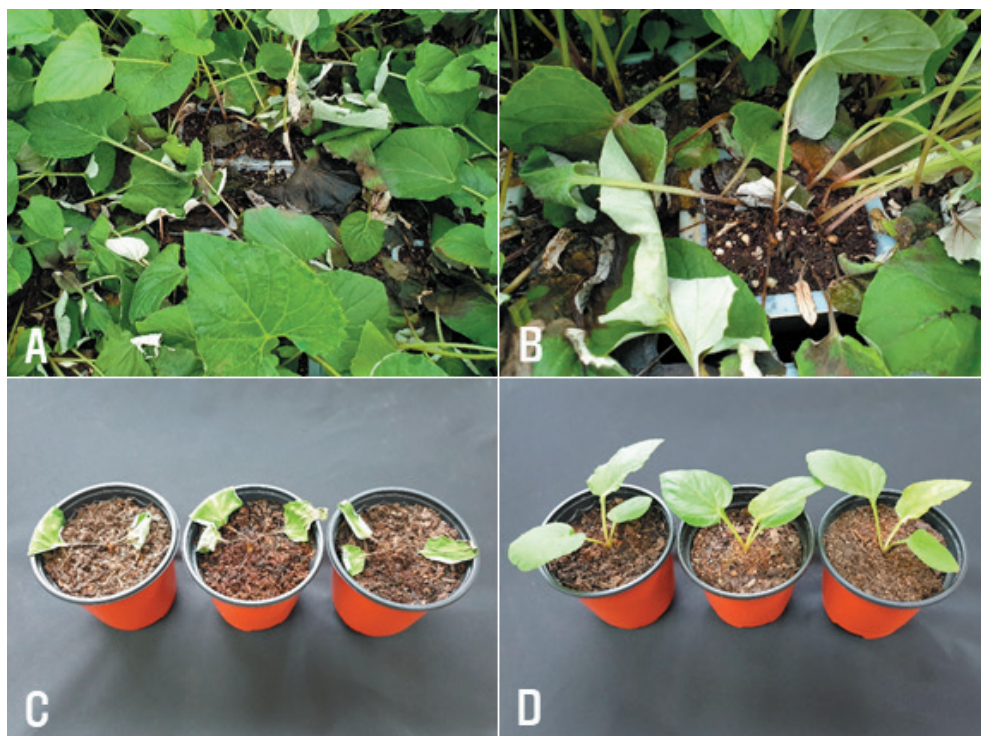


Fig. 1. Damping-off symptoms of deltoid synurus plants. A and B: Symptoms observed in the vinyl greenhouse investigated. C: Symptoms induced by artificial inoculation tests with *Rhizoctonia solani* AG-1 (IB) isolates. D: Non-inoculated plants (control).

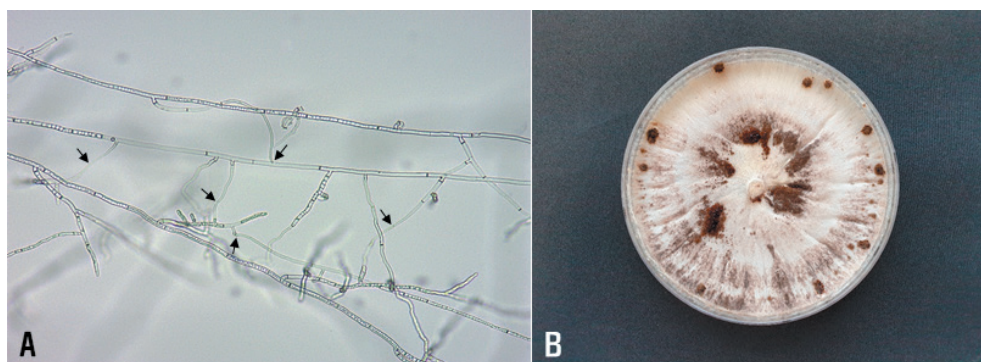


Fig. 2. Anastomosis test of *Rhizoctonia solani* isolate from deltoid synurus and cultural appearance of the isolate. A: Anastomosis reactions between the tested isolate (left) and the tester isolate (right) of *R. solani* AG-1 (IB) observed by light microscope. The arrows indicate points of hyphal anastomosis. B: A colony of *R. solani* AG-1 (IB) isolate grown on potato dextrose agar at 25°C for 10 days.

Three isolates of *R. solani* AG-1 (IB) were tested for pathogenicity on deltoid synurus using artificial inoculation. Mycelial disks of 6 mm diameter were cut from the margins of actively growing cultures of each isolate on PDA, and placed at the soil surface level of 36-day-old deltoid synurus plants grown in circular plastic pots (height, 9 cm; upper diameter, 10 cm; lower diameter, 7 cm) in a vinyl greenhouse. Inoculated plant pots were placed in plastic boxes (60×43×33 cm), with 100% relative humidity, at room temperature (24-26°C) for 24 hr. Then, the inoculated plant pots were removed from the boxes and kept indoors. The virulence of the isolates was rated based on the severity of damping-off symptoms three days post inoculation. The inoculation test was performed in triplicate.

All the tested isolates of *R. solani* AG-1 (IB) induced damping-off symptoms in the inoculated plants (Fig. 1C), whereas no symptoms were observed in the control plants (Fig. 1D). The symptoms induced via the artificial inoculation of plants were similar to those observed in plants from the vinyl greenhouse investigated. The isolates that induced symptoms on the plants were re-isolated from the lesions.

R. solani is reported to cause damping-off in various crops [5-7]. Nevertheless, this is the first report of *R. solani* AG-1 (IB) causing damping-off in deltoid synurus.

ACKNOWLEDGEMENT

This study was supported by a research grant (PJ014507012020) from the Rural Development Administration, Korea.

REFERENCES

1. Parmeter JR, Whitney HS. Taxonomy and nomenclature of the imperfect state. In: *Rhizoctonia solani*, Biology and Pathology. Parmeter JR, editor. Los Angeles and London: University of California Press; 1970. p. 7-19.
2. Sneh B, Burpee L, Ogoshi A. Identification of *Rhizoctonia* species. St. Paul: APS Press; 1991.
3. Kim WG, Cho WD, Lee YH. Anastomosis groups and cultural characteristics of *Rhizoctonia solani* isolates from crops in Korea. *Kor J Mycol* 1994;22:309-24.
4. Watanabe B, Matsuda A. Studies on the grouping of *Rhizoctonia solani* Kühn pathogenic to upland crops. Appointed Experiment (Plant diseases and insect pests). Agric For Fish Res Counc and Ibaraki Agric Exp Stn Japan 1966;7:1-131.
5. Kim WG. Pathogenicity of anastomosis groups and cultural types of *Rhizoctonia solani* isolates on crops. *Korean J Plant Pathol* 1996;12:21-32.
6. Kim WG, Cho WD, Ryu HY. Diagnosis and control of *Rhizoctonia* diseases on crops. Suwon: National Agricultural Science and Technology Institute; 1995.
7. Farr DF, Rossman AY. Fungal Databases, U.S. National Fungus Collections, ARS, USDA; 2021 [cited 2021 February 23]. Available from: <https://nt.ars-grin.gov/fungaldatabases/>.